

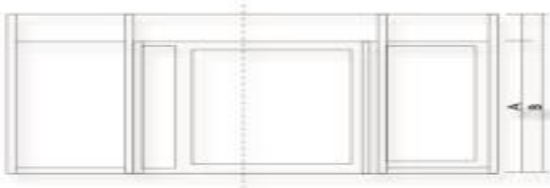
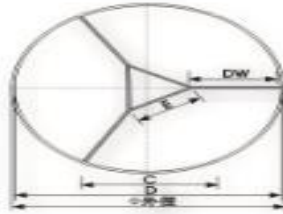
DORTEX REVOLVING DOOR



Automatic Revolving Door Series







OXDM-3 three-wing revolving door is born from a new conception and function. It makes the revolving channel system and the max revolving diameter to one whole, up to "the max passing" and "perfect windproof effect" terms, and then form a new door system.

OXDM-3 three-wing revolving door combine with safety and practical, put the user's safety in the top. It install on the pillar, to prevent from clamping.

The door frames all adopt special standard aluminum material, process well and surface clean, many surface treatment ways can be chosen.

Spacious access space and elegant shape, and the airflow is less than outside. It can prevent from wind, dust and rubbish.

Save the access space, compared with the regular door, capture more spacious volume.

Revolving speed control, you can access safety, even if under strong wind.

Converse revolving stop, make sure revolve in one-way.

Stop when urgency thing hapened, to ensure the max ground volume.

Apply to the restaurant, Supermarket, office, airport and other entertainment places.

Functions:

- | | |
|--|-------------------------------|
| Sensor revolve | Urgency stop |
| Stop | Magnetic cards identification |
| Speed adjust | Safety anti-clamp |
| Windproof | Lock at night |
| Conditions and breakdown automatic display | |
| Safety anti-collision | Low speed |
| Fire central control | Manual & automatic exchange |

Technology parameter:

1. Power: AC 220V \pm 10% 50 HZ
2. Voltage: Drive unit 0.75 kw, light 12V/AC 360W
3. Micro-computer input. output post: 30 pieces
4. Transmission: control by multi-speed
5. Frequency scope: 0HZ~50HZ
6. Infrared sensor: detection region is 4m x 2m
7. Infrared anti-clamp sensor: At the height of 1.7m, the caliber of infrared line is 0.10m
8. Infrared anti-collision sensor: At the height of 2m, the caliber of infrared line is 0.13m.